

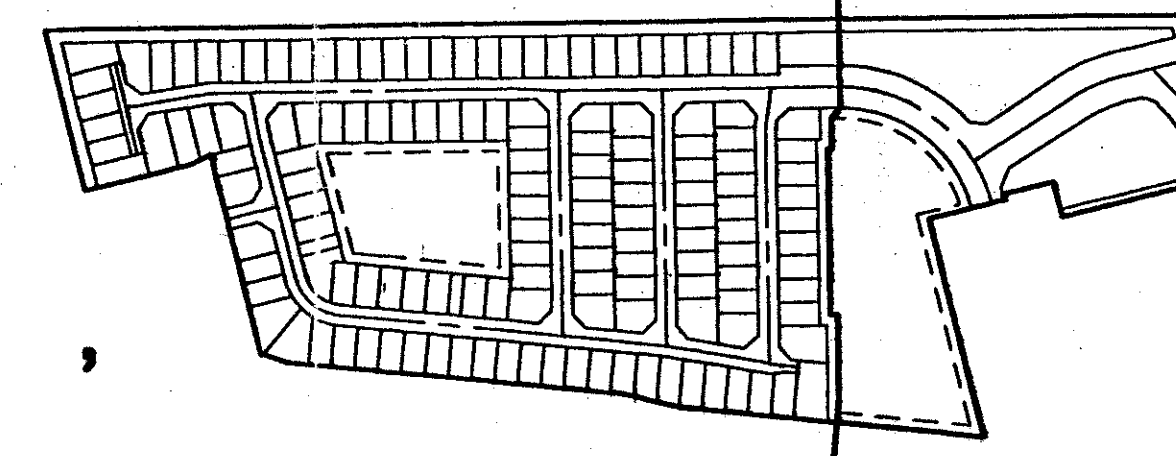
HILLSBORO COUNTRY CLUB PLAT ONE

SHEET 2

SHEET 3

21

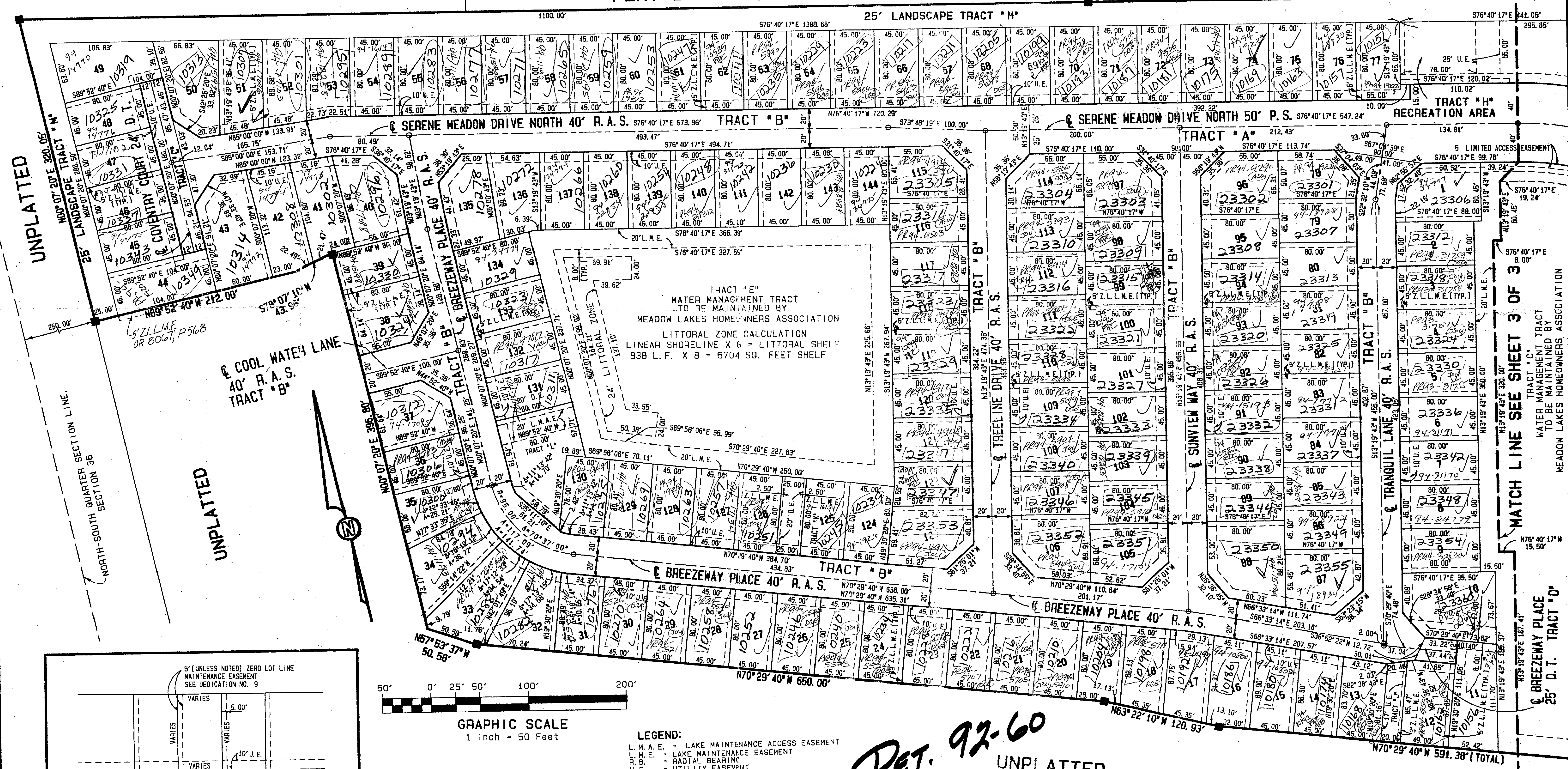
A PLANNED UNIT DEVELOPMENT
SITUATE IN SECTION 36, TOWNSHIP 47 SOUTH, RANGE 41 EAST,
PALM BEACH COUNTY, FLORIDA



INDEX MAP

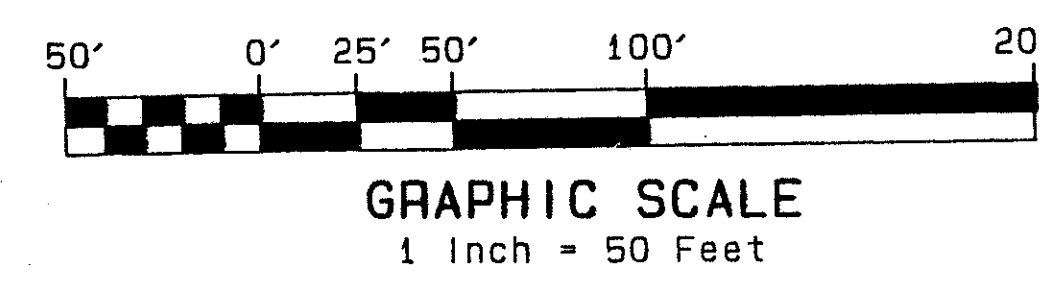
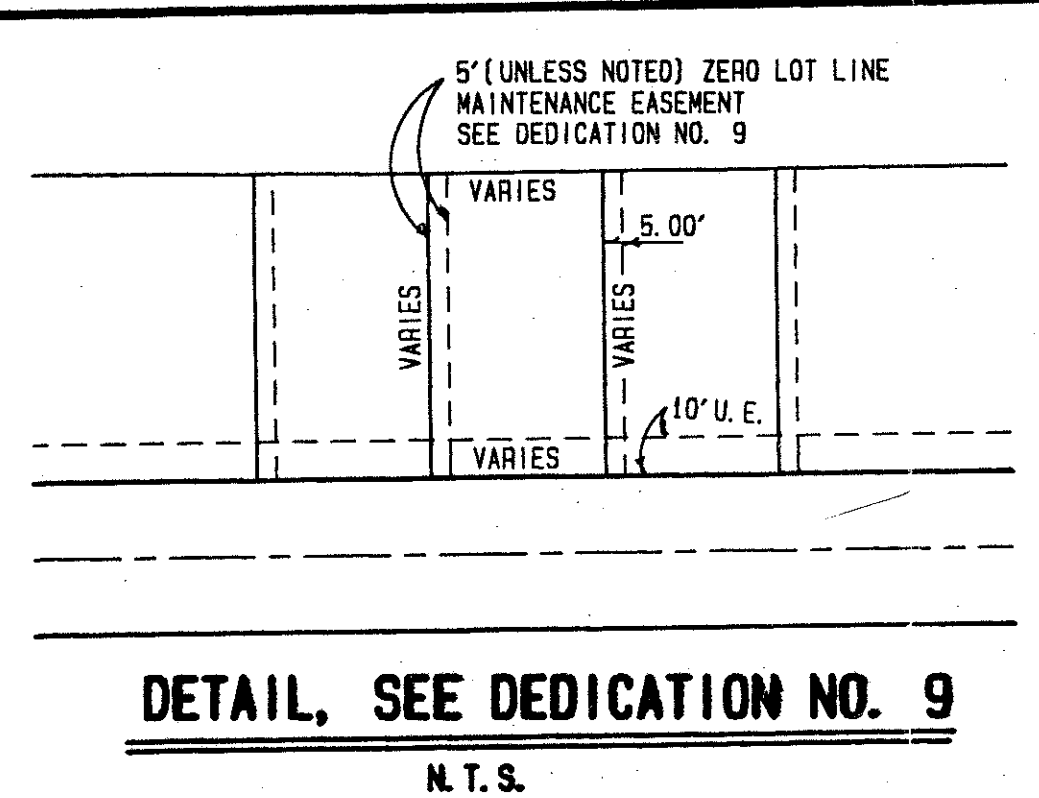
STATE OF FLORIDA SS
COUNTY OF PALM BEACH
This plat filed for record at
this day at
19 and duly recorded in
Plat Book No. on page
DOROTHY H. WILKEN, Clerk
Circuit Court
By: D.C.

FEBRUARY 1994 SHEET 2 OF 3
BOCA ENTRADA PLAT 1
BOCA ENTRADA PLAT 1 PLAT BOOK 31, PAGE 95
UNPLATTED
PLAT BOOK 31, PAGE 95
576' 40' 17" E 2199.89' (TOTAL)



TAZ 780

SUBDIVISION * Hillsboro C.C. P1
BOOK 72 PAGE 20
FLOOD ZONE AO-1
QUAD # 69
SE 92-60
PUD NAME Hillsboro C.C.



- LEGEND:
- L.M.A.E. = LAKE MAINTENANCE ACCESS EASEMENT
 - L.M.E. = LAKE MAINTENANCE EASEMENT
 - R.B.E. = RADIAL BEARING
 - U.E. = UTILITY EASEMENT
 - D.E. = DRAINAGE EASEMENT
 - P.B. = PLAT BOOK
 - O.R.B. = OFFICIAL RECORDS BOOK
 - PG. = PAGE
 - P.S. = PRIVATE STREET
 - R.A.S. = RESIDENTIAL ACCESS STREET
 - D.T. = DRIVEWAY TRACT
 - P.C.P. (PERMANENT CONTROL POINT) NO. 4380
 - P.R.M. (PERMANENT REFERENCE MONUMENT) NO. 4380
 - Z.L.L.M.E. = ZERO LOT LINE MAINTENANCE EASEMENT

PET. 92-60
ALLOC. #0001
UNPLATTED
0619-001
72/21

ATLANTIC - CARIBBEAN MAPPING, INC.
PROFESSIONAL LAND SURVEYORS
357 LIANA DRIVE
WEST PALM BEACH, FLORIDA 33415
(407) 687-3898 FAX (407) 687-8752
JOB NO. 92007
HILLSBORO COUNTRY CLUB PLAT ONE